



Passaggio Roxtec FlamePlus™

Passaggio leggero con funzionalità a frattura integrata

Roxtec FlamePlus™ è un sistema di passaggio multicavo che può essere fissato su diverse tipologie di strutture. La modularità del telaio semplifica la gestione e la logistica e il design leggero lo rende ideale per i pannelli sandwich, mentre l'ampia flangia fornisce la distanza tra i bulloni e l'apertura del telaio per ridurre al minimo il rischio di crepe quando imbullonato a pareti in cemento o mattoni. La piastra a frattura integrata fornisce la tenuta stagna durante e dopo la fase di costruzione. I moduli di sigillatura sono adattabili a cavi di dimensioni differenti e possono essere utilizzati come scorta.



- Leggero
- Tenuta in fase di costruzione
- Apribile
- Design modulare

Caratteristiche



Resistenza al fuoco



IP/UL NEMA

Struttura dell'installazione



Pannello sandwich



Cemento

Tipo di montaggio



Imbullonatura

Ratings e certificati

Fuoco

- Classificazione E/EI secondo EN 13501

Tenuta

- IP 66

Dimensioni telaio

mm/kg

Le varianti di telaio seguenti rappresentano una selezione limitata. Per la gamma completa di telai e configurazioni, visita [roxtec.com](https://www.roxtec.com).

Titolo	Aperture del telaio	Spazio di riempimento	Dimensioni esterne WxHxD	Dimensioni apertura w x h	Peso	Art. Nr.
FLAMEPLUS 6x3 WITH EXT. FRAME	3	120 x 180	642 x 433 x 310		11.4	223807
FLAMEPLUS 6x2 WITH EXT. FRAME	2	120 x 180	487 x 433 x 310	351 x 297	8.4	223806
FLAMEPLUS 6x1 WITH EXT. FRAME	1	120 x 180	331 x 433 x 310		5.6	223805
FLAMEPLUS 6x1	1	120 x 180	332 x 433 x 67	196 x 297	2.6	213303
FLAMEPLUS 6x2	2	120 x 180	487 x 433 x 67	351 x 297	5	213321
FLAMEPLUS 6x3	3	120 x 180	643 x 433 x 67	507 x 297	6.4	213322
FLAMEPLUS 6x4	4	120 x 180	798 x 433 x 67	662 x 297	7.8	235413

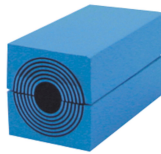


Dati relativi ai componenti

Componenti per la sigillatura



Lubrificante



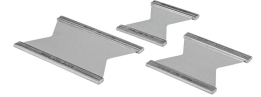
Modulo RM con Multidiameter™



kit di sigillatura



Wedge kit e Wedge Roxtec



Piastra di ancoraggio Roxtec

Per informazioni dettagliate, visita la pagina [roxtec.com](https://www.roxtec.com).

The product information provided by Roxtec does not release the purchaser of the Roxtec system, or part thereof, from the obligation to independently determine the suitability of the products for the intended process, installation and/or use.

Roxtec gives no guarantee for the Roxtec system or any part thereof and assumes no liability for any loss or damage whatsoever, whether direct, indirect, consequential, loss of profit or otherwise, occurred or caused by the Roxtec systems or installations containing components not manufactured by an authorized manufacturer and/or occurred or caused by the use of the Roxtec system in a manner or for an application other than for which the Roxtec system was designed or intended.

Roxtec expressly excludes any implied warranties of merchantability and fitness for a particular purpose and all other express or implied representations and warranties provided by statute or common law. User determines suitability of the Roxtec system for intended use and assumes all risk and liability in connection therewith. In no event shall Roxtec be liable for indirect, consequential, punitive, special, exemplary or incidental damages or losses.

The Roxtec products are offered and sold in accordance with the conditions of the Roxtec General Terms of Sales. The latest version of the Roxtec General Terms of Sales can be downloaded from <https://www.roxtec.com/en/about-us/about-roxtec/general-terms-of-sales/>

We reserve the right to make changes to the product and technical information without further notice. Any errors in print or entry are no claims for indemnity. The content of this publication is the property of Roxtec International AB and is protected by copyright.

This document was generated on: 2024-05-18